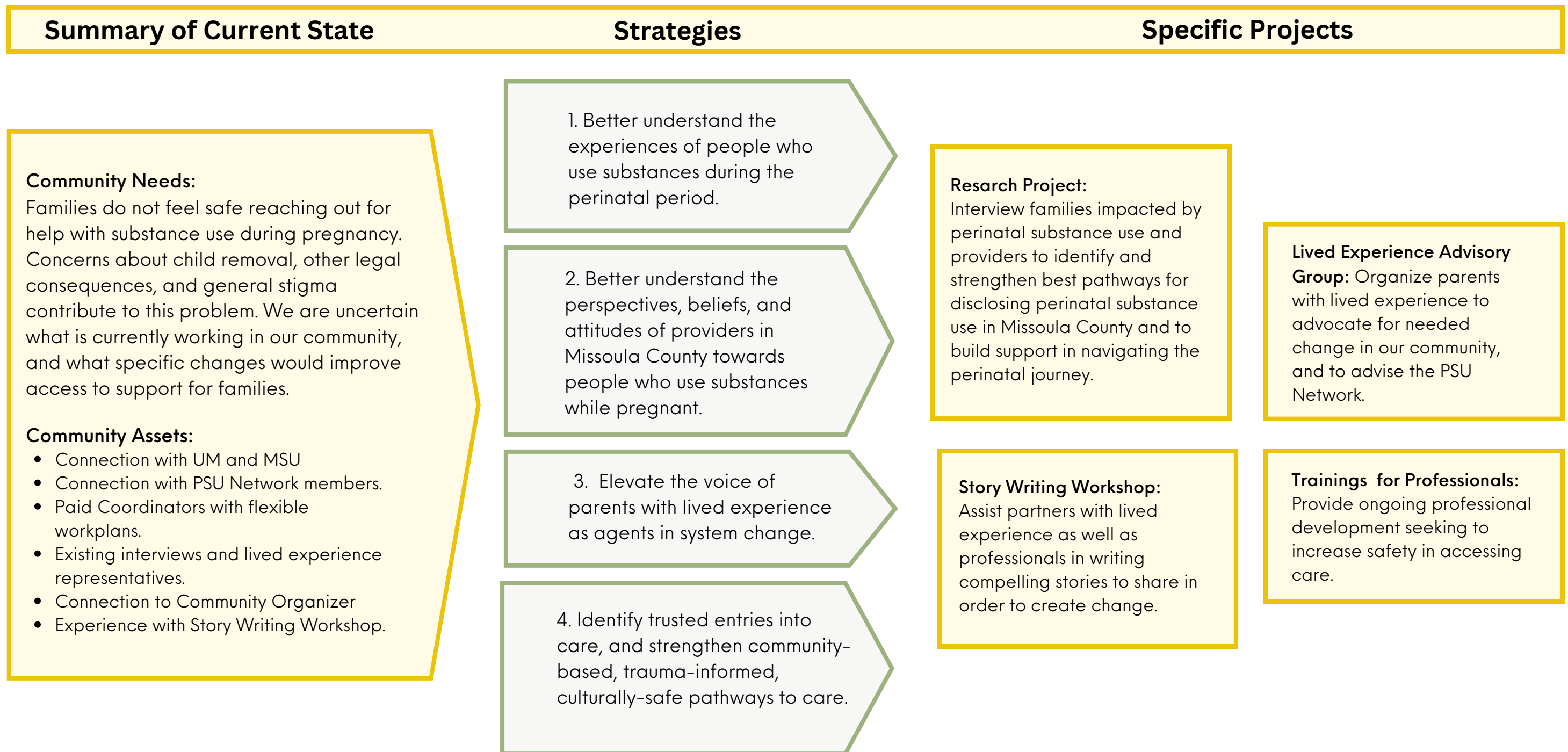


Trauma-Informed Organizations Initiative

MISSOULA COUNTY
PERINATAL SUBSTANCE USE NETWORK

Critical Shift: I worry about stigma and punishment for seeking care. → I feel safe and supported in seeking care

Goal 1: Identify and strengthen best pathways for disclosing perinatal substance use.

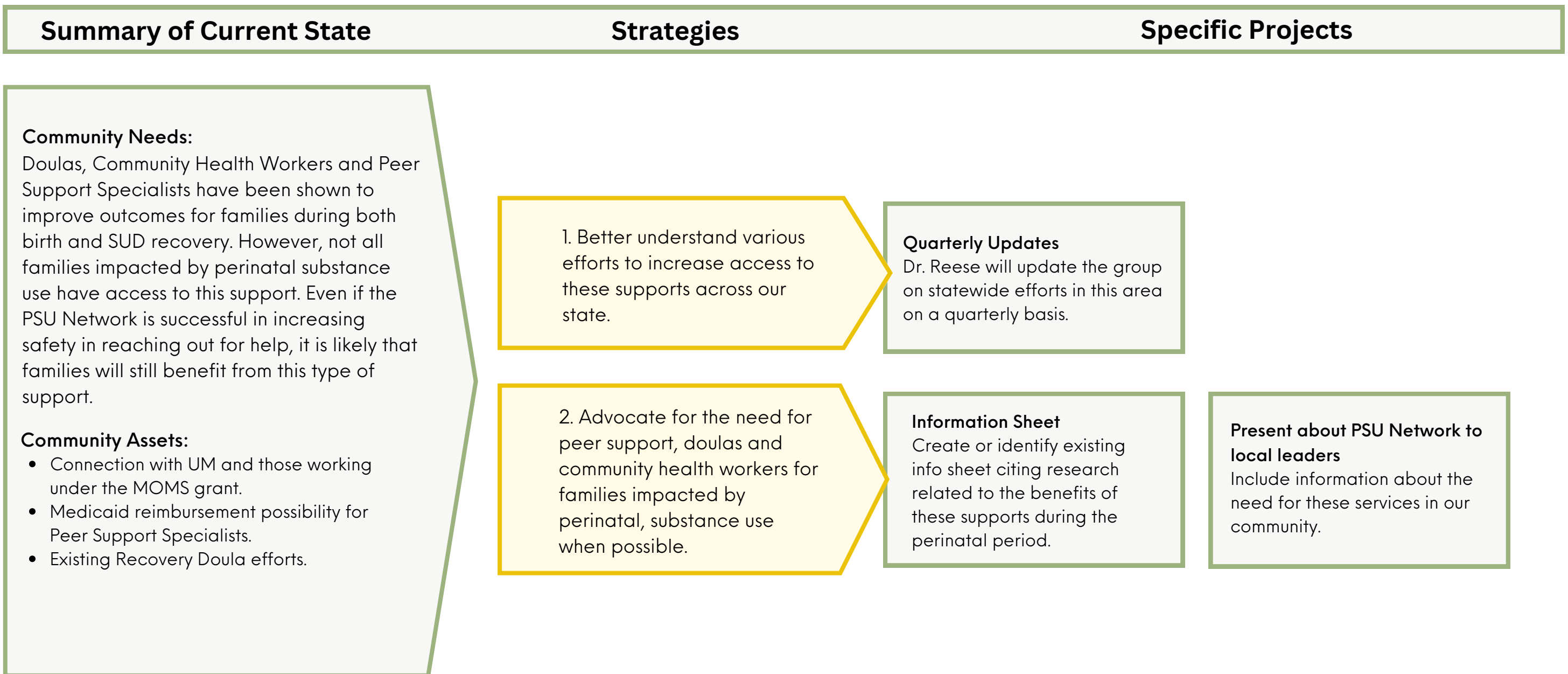


Trauma-Informed Organizations Initiative

MISSOULA COUNTY
PERINATAL SUBSTANCE USE NETWORK

Critical Shift: I worry about stigma and punishment for seeking care. → I feel safe and supported in seeking care

Goal 2: Create options for support in navigating health and treatment programs (i.e. doulas, community health workers or peer support).



Family Treatment/Recovery Housing Initiative

MISSOULA COUNTY
PERINATAL SUBSTANCE USE NETWORK

Critical Shift: Many housing opportunities are not available to individuals with criminal records. → Safe and affordable housing is available to all, regardless of past histories of SUD, incarceration, CFS involvement, etc.

Summary of Current State	Strategies	Specific Projects
--------------------------	------------	-------------------

Goal: Increase the number of beds for full-family treatment and recovery residences in Missoula County.

Community Needs:
There are currently very few facilities offering residential treatment or recovery housing that allow parents to bring children. Options for fathers are even more limited than those for mothers. Several program across the state serving mothers with children have recently closed.

Community Assets:

- Mountain Home Montana's expansion.
- .Increased Medicaid reimbursement rates.
- Creation of Recovery Residence Alliance of Montana, and NARR accreditation process.

1. Better understand the demand for treatment and recovery housing that allows children.

Data collection and Report
Collect data related to current capacity and demand for residential treatment, recovery and sober living facilities that allow children. Disseminate report widely.

Build Relationship with Possible Residential Treatment/Recovery Programs
Identify other groups that are in a position to run family treatment/recovery facilities. Build relationships to better understand their needs and interests, and share our group goals.

2. Support programs that are expanding to provide residential treatment and recovery services that allow children.

Support Mountain Home Montana
Invite Mountain Home Montana to presentations and provide letters of support as needed.

Goal: Ensure quality of full-family treatment & recovery residences in Missoula County.

3. Increase quality of existing residential treatment and recovery facilities that allow children.

Trainings for Professionals:
Provide ongoing professional development to increase quality of residential treatment and recovery facilities that allow children.

Learn about existing programs: Meet with staff from existing facilities to learn more about effective policies, programs, and practices.